

TIMOTHY YARGER  
FINE ART  
LOS ANGELES

Presents

**Caroline PM Jones**

*Liminal Vessels:*  
Sculpture from the Stillwater Threshold





## ***Omphalos · Rootline Passage · Between Vessel · The Enwound***

This series draws from wetland environments where land and water meet -- places of stillness, reflection, and quiet transformation. Inspired by cypress trees, the wood, material and root systems, the works take form from structures that exist both above and below the surface, holding a sense of suspension between states.

Historically, cypress has been shaped into vessels for carrying and containment, for moving and building. Here, that lineage is abstracted: the vessel becomes not only a container of matter, but of memory, time, and presence.

Each sculpture explores the threshold -- between interior and exterior, weight and lightness, what is seen and what is held. Forms are divided and held in tension, often separated by clear acrylic elements that introduce reflection as a material. These intervals reference the space between, where air, light, and time become part of the work itself.

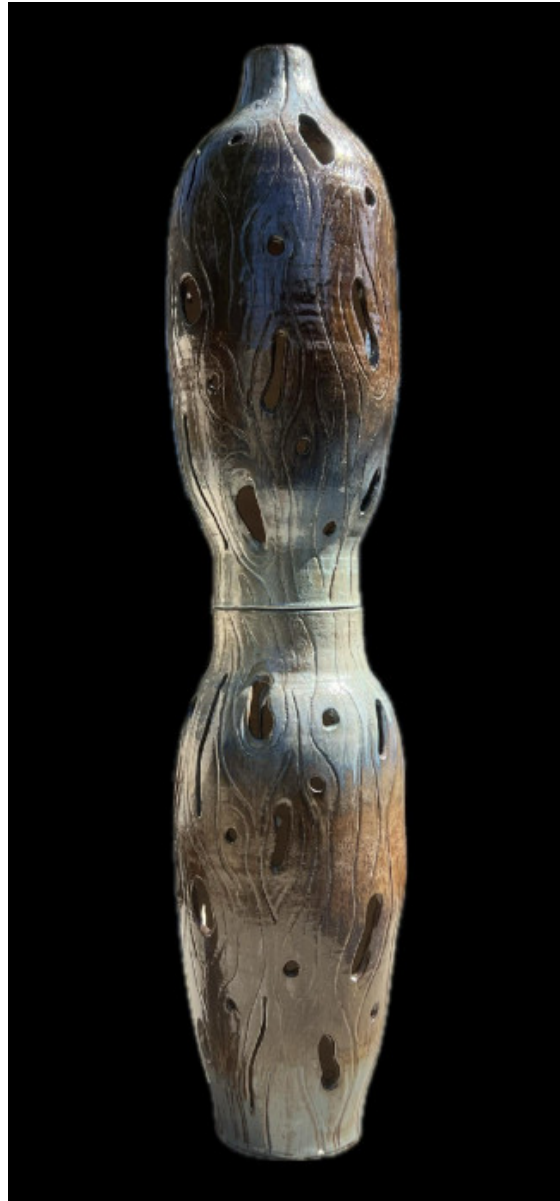
***Omphalos***: anchors the series as a center point.

***Rootline Passage***: traces unseen connections above and beneath the surface.

***The Between Vessel***: reflects on the vessel as both form and function.

***The Enwound***: is held and bound—its surface encircled by its own growth.

Together, these works consider The Liminal Vessel as one of reflection where form, memory, and space converge within the stillness of the threshold.



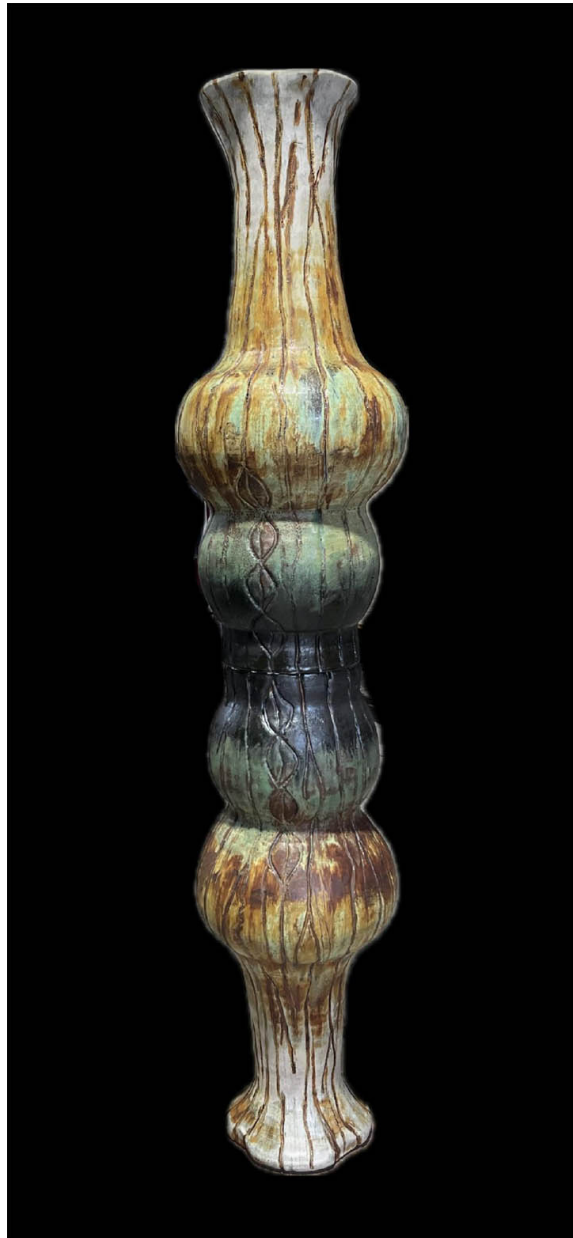
*Omphalos, 2026*  
75 x 15 x 15 inches  
\$28,000



*Rootline Passage, 2025*

50 x 9 x 9 inches

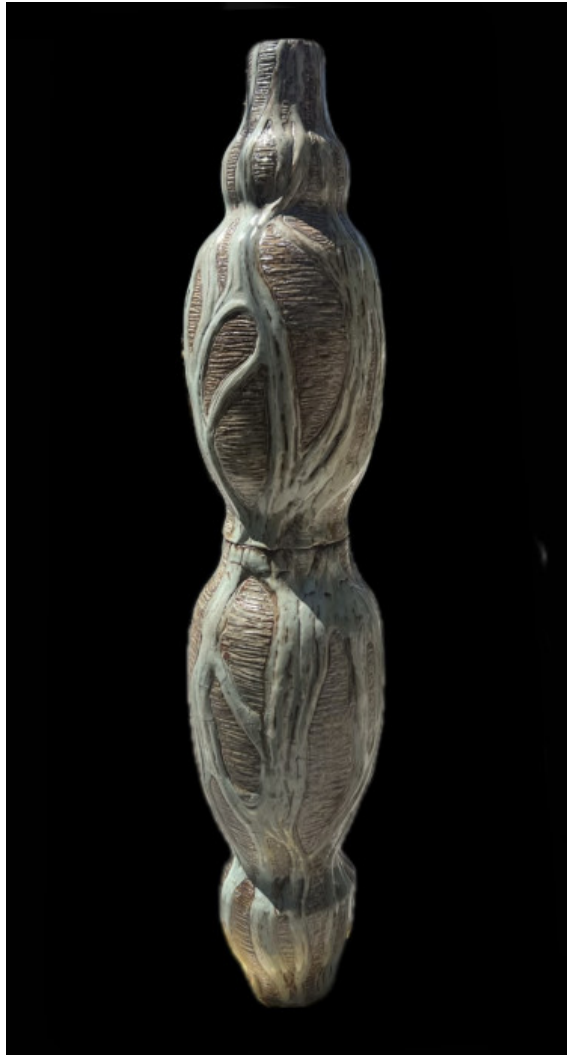
\$24,000



*The Between Vessel, 2025*

55 x 11 x 11 inches

\$24,000



*The Enwound, 2026*

70 x 13 x 13 inches

\$26,000

*Liminal Vessels: Sculptures from the Stillwater Threshold*, extends my longstanding inquiry into landscape, memory, and the symbolic language of natural forms. Developed following a period of immersion in the reflective wetlands and cypress swamps of South Carolina, the series explores the idea of the liminal -- the transitional space between water and land, light and shadow, presence and echo, memory and story.



With these sculptural forms, I have continued my material and conceptual investigation into the ways landscape holds memory. The vessels rise like rooted columns, echoing the vertical architecture of cypress knee -- structures that allow the tree to breathe through water and mud and have long been regarded as caretakers of threshold places. Their surfaces, built through a layered process of glazing and firing, register reflection and stillness, suggesting both sedimented time and the shifting mirror of water.

Though rooted in a specific geography, the work moves beyond documentation toward a quieter, more elemental meditation on the unseen.

Reflection becomes both subject and metaphor: a membrane between worlds and a means of holding what is carried beneath the surface of experience.

This series continues my interest in allegory, material intelligence, and the contemplative act of observation. *Liminal Vessels* represents a deepening of the sculptural language—an exploration of thresholds, ancestry, and the quiet architectures that shape both land and human understanding.

- Caroline PM Jones



## **TIMOTHY YARGER FINE ART**

Timothy Yarger entered the art business in 1982 and has been a Los Angeles based art dealer since 1986. After directing galleries in San Francisco, New York and Beverly Hills, Timothy Yarger Fine Art, Inc. was established in 1997.

Timothy Yarger Fine Art has exclusive artist representation of contemporary artists in primary markets and secondary market expertise, which compliments its scholarship in historic material of the 20th Century. The gallery produces regular exhibition programming, alongside its services in assisting individuals in building and managing their collections.

Throughout the gallery's history, TYFA has had a particular interest in the Los Angeles based movement of Light and Space and has worked with James Turrell, Robert Irwin and Peter Alexander. Creating light in all techniques continues to inform our gallery roster and the next generation of artists such as Mads Christensen, Caroline PM Jones, Pancho Luna and Robert Stone.

TYFA promotes scholarship, broad connoisseurship, and public programming through collaboration with art historians, critics, and museum professionals, who contribute to the galleries' events and publications. TYFA is dedicated to advancing the careers of their artists while contributing to the contemporary art dialogue.

Timothy Yarger began mounting exhibitions internationally in 1995 and since 2002 has conducted more than 20 exhibitions on preeminent 20th Century artists, included Andy Warhol, Roy Lichtenstein, Pablo Picasso, David Hockney, Pierre-Auguste Renoir, Joan Miro, Marc Chagall, as well as selected group exhibitions of established contemporary artists. TYFA has provided exhibitions for other galleries in the United States, China, Southeast Asia and Europe.

[www.yargertineart.com](http://www.yargertineart.com)

(310) 278 - 4400

**General Inquires**  
[info@yargertineart.com](mailto:info@yargertineart.com)